

**Pedestal Calculation  
installation/Placement  
when using pavers**

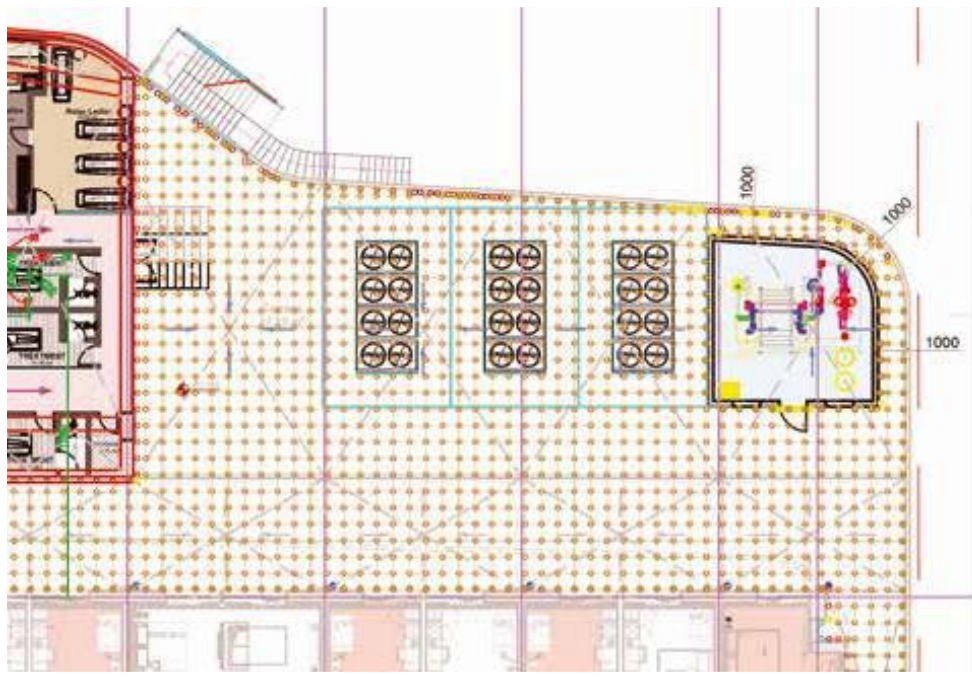
**TECHNICAL  
INFORMATION**



Our mission?  
To help you in  
The realization  
Of your projects

## Technical service

Beyond complete series of pedestals and terrace accessories, we offer personalized service in terms of technical support and assistance. We accompany our clients in the technical realization of their projects. On request, Jolani Distribution inc. assists with the layout of the pavers, calculating the number of pedestals, the composition of the support systems and installation arrangements



## Shop- Drawing

	13	PB 2 + UE20	+PADS 3mm+2xU-WALL
	325	PB 2 + UE20	+PADS 3mm +U-EDGE+Tabr3mm
	66	PB 3 + UE20	+PADS 3mm
	2898	PB 3 + UE20	+PADS 3mm + TABS
	315	PB 3 + UE20	+PADS 3mm + WALL
	279	PB 3 + UE20	+PADS 3mm +WALL+TABS3mm

# Quantity of pedestals as determined by paver size

## STANDARD SYSTEM / PEDESTALS

### AVERAGE NUMBER OF PEDESTALS PER m<sup>2</sup>

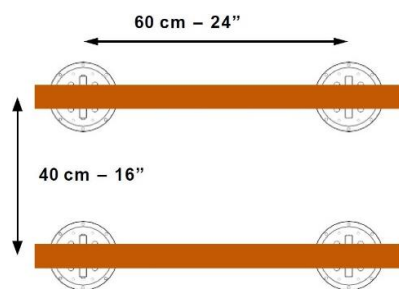
Dimensions and surface area of the terrace	20 m <sup>2</sup>	50 m <sup>2</sup>	100 m <sup>2</sup>	1,000 m <sup>2</sup>
Length	5	10	10	50
Width	4	5	10	20

Paver format	* Pedestals/m <sup>2</sup>	* Pedestals/m <sup>2</sup>	* Pedestals/m <sup>2</sup>	* Pedestals/m <sup>2</sup>
40×40 cm	7.70	7.28	6.76	6.43
50×50 cm	4.95	4.62	4.41	4.14
60×60 cm	4.00	3.60	3.24	2.94
75×75 cm	4.90	4.36	4.21	3.71
80×80 cm	4.15	4.06	3.65	3.24
90×90 cm	6.00	5.76	5.76	5.15
100×100 cm	4.95	4.62	4.41	4.14
120×30 cm	7.50	6.48	6.30	5.78
120×40 cm	5.50	5.04	4.68	4.34
120×60 cm	4.00	3.60	3.24	2.98
90×45 cm	6.00	5.76	5.76	5.15
120×120 cm	4.00	3.60	3.24	2.94
45×45 cm	6.00	5.76	5.76	5.15
60×30 cm	7.50	6.48	6.30	5.78
60×40 cm	5.50	5.04	4.68	4.34
40×80 cm	7.70	7.28	6.76	6.43
50×100 cm	4.95	4.62	4.41	4.14
180×30 cm	7.50	6.48	6.30	5.78
160×30 cm	7.7	7.18	6.8	6.47

The use of pedestals is recommended for pavers of minimum 30x30 cm, in agreement with the tile setter.

For the laying of non-square pavers, the amount of pedestals used varies according to their place under the pavers. This information is given as an indication, the quantity varying according to the specificities of each project.

**Jolani Distribution Inc. cannot be held responsible for variations in quantities.**



Average consumption for a wooden terrace:  
one pedestal every 60 cm and one joist every 40 cm.  
The average is 4 to 5 pedestals per m<sup>2</sup>.



## RECOMMENDED POSITIONS OF THE PEDESTALS UNDER THE PAVERS

